

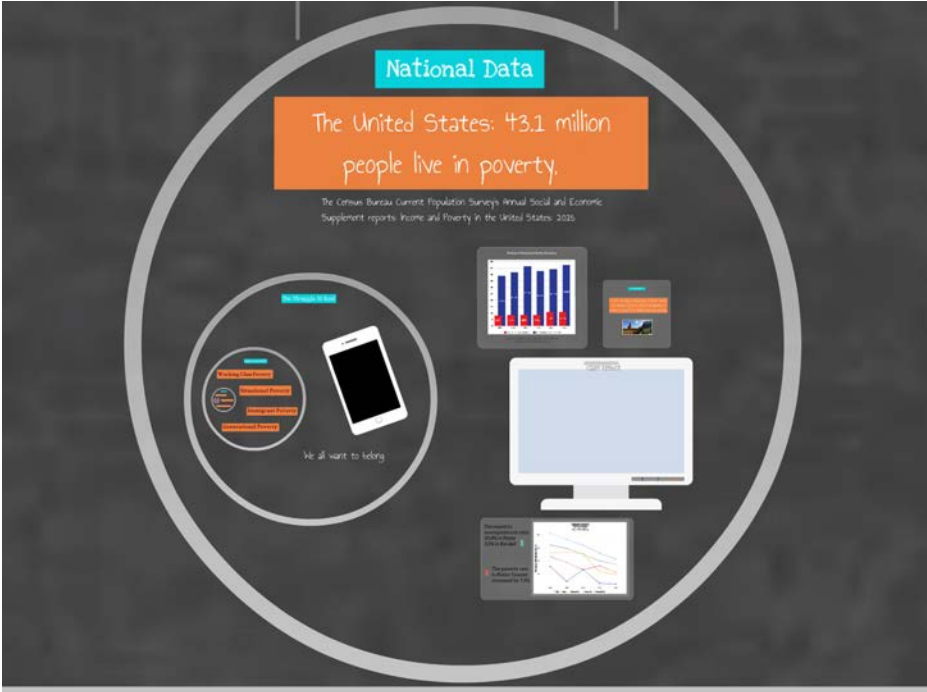


Raul Rodarte-Suto  
raul@unitedwayama.org

## Creating an Opportunity Community

Upstream &  
Downstream

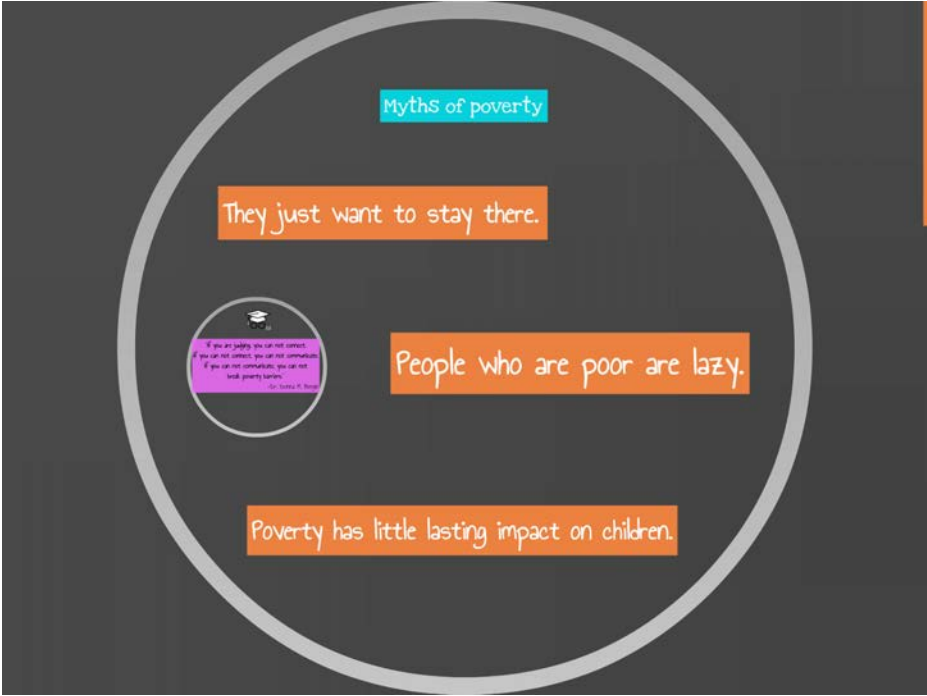


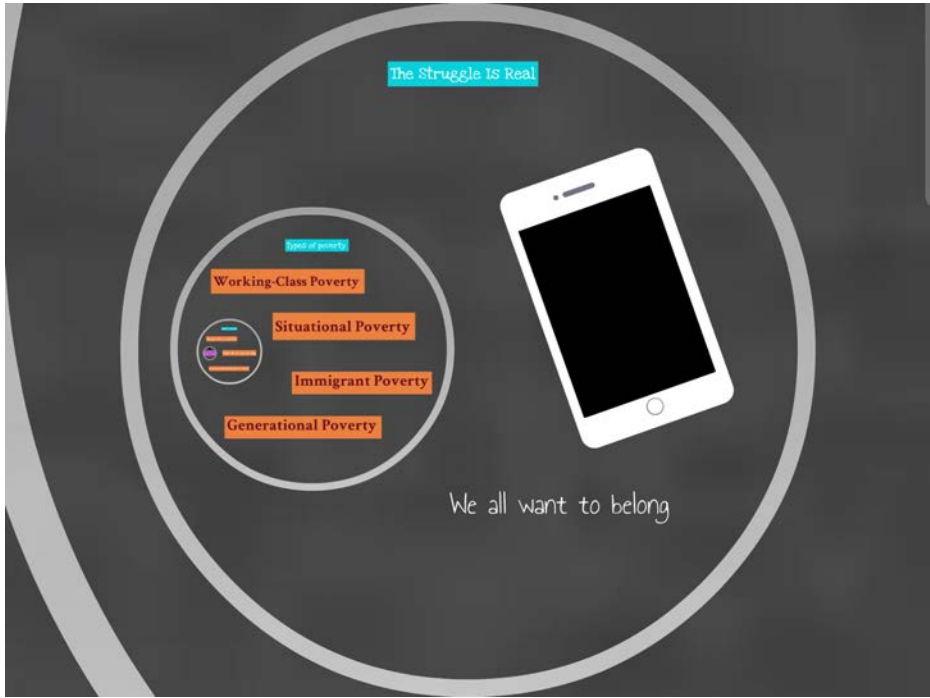


Ed

"If you are judging, you can not connect.  
 If you can not connect, you can not communicate.  
 If you can not communicate, you can not  
 break poverty barriers."

-Dr. Donna M. Beegle

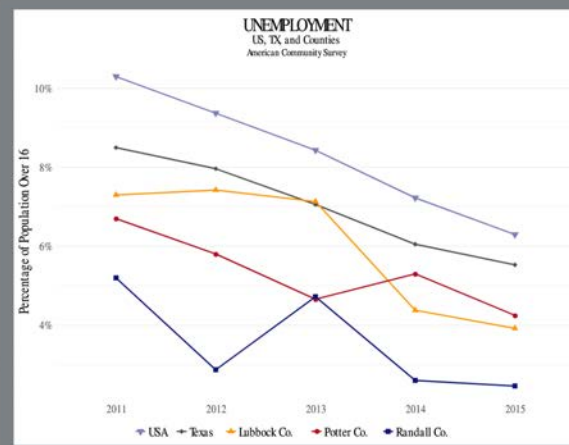




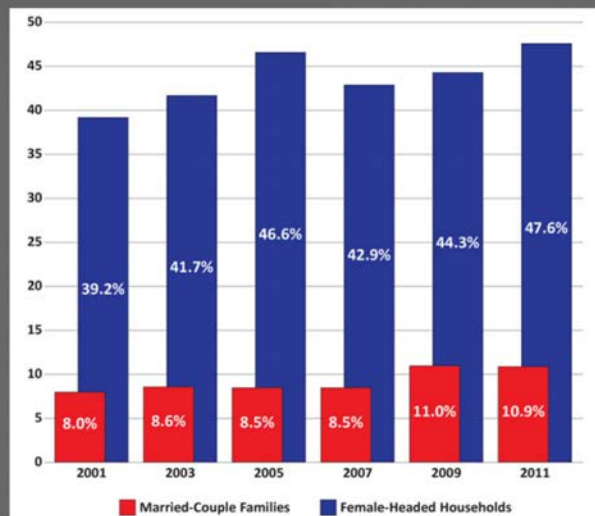
Decreased in unemployment rates  
20.8% in Potter  
3.8% in Randall



The poverty rate in Potter County increased by 7.5%



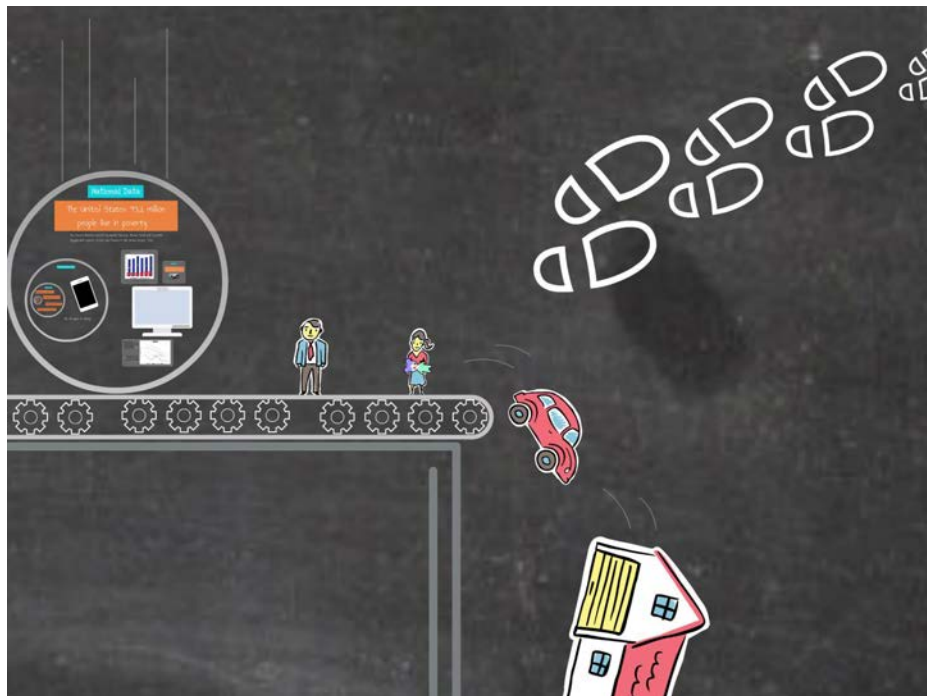
Children in Poverty by Family Structure



Source: U.S. Dept. Health and Human Services, ASEP Issue Brief: Information on Poverty and Income Statistics, Sept. 12, 2012.

Local Data

In 2014, the largest demographic in Potter County was children in poverty. And the demographic of children in poverty in Randall County was growing.



**Plan:**  
**ED:WORK:WED**

Haskin's and Sawhill's research shows that those who...

Wait until a two income household /marriage to start a family (aka have a baby)

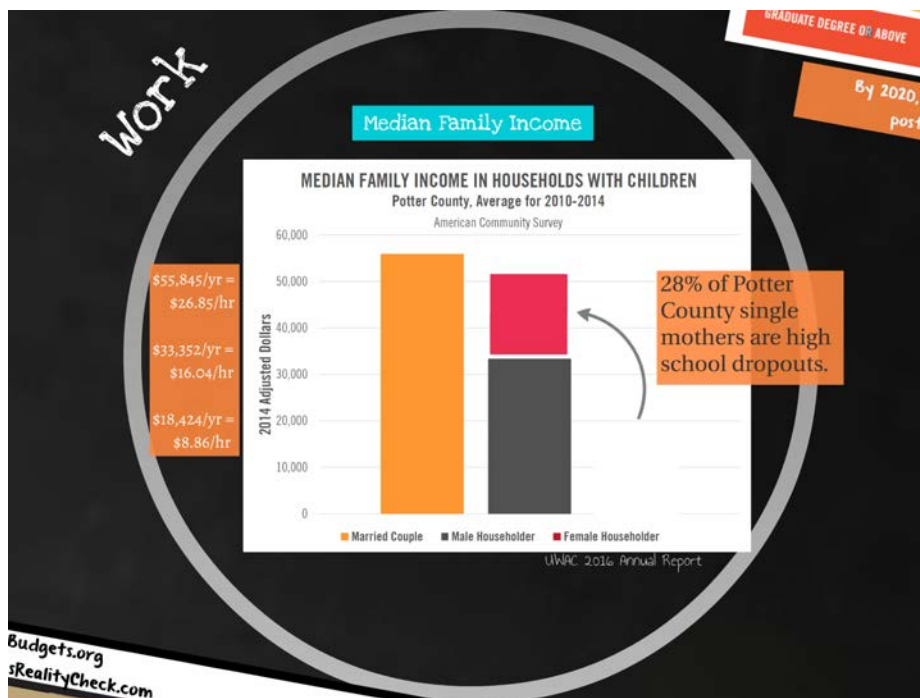
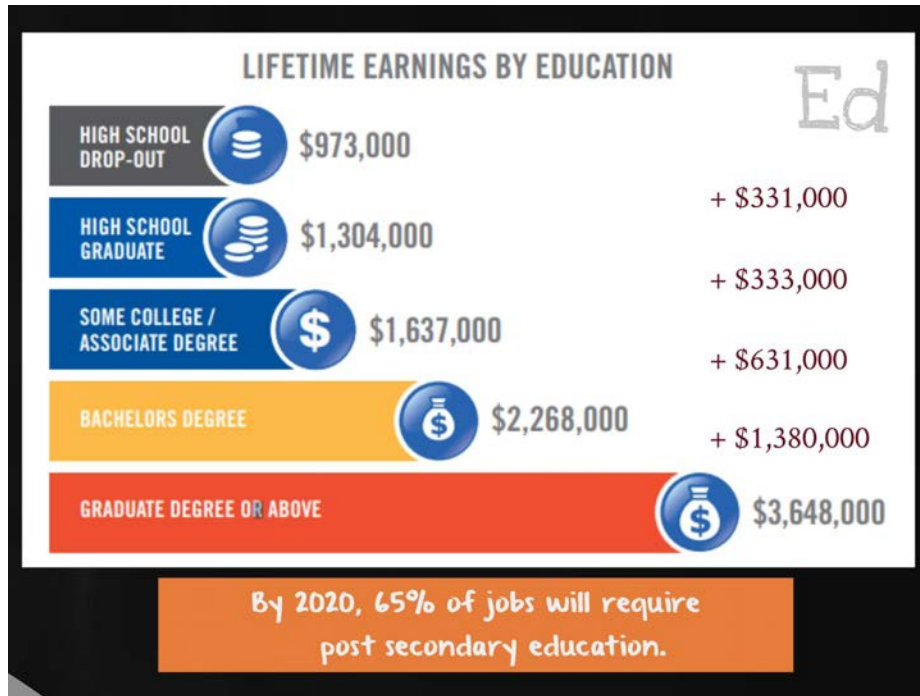
Finish High School

Work full time

reduce their risk of living in poverty to 2%.

***Building an Opportunity Society***  
by Ron Haskin and Isabel Sawhill

Provided a guiding principal for working upstream.







If a 4-year college degree was handed to each single parent in poverty, there are not jobs available in this area which pay the wage required to move these families out of poverty.


Collective Impact



We fight for the  
**HEALTH**  
**EDUCATION**  
and  
**FINANCIAL**  
**STABILITY**  
of every person in our  
community.

Change expectations  
Change definitions

what  
td



We fight  
**H**  
**EDUC**  
**FINA**  
**STA**

Ron Alston is a YMCA program director and personal trainer.



Raul Rodarte-Suto  
[raul@unitedwayama.org](mailto:raul@unitedwayama.org)

Creating an Opportunity Community